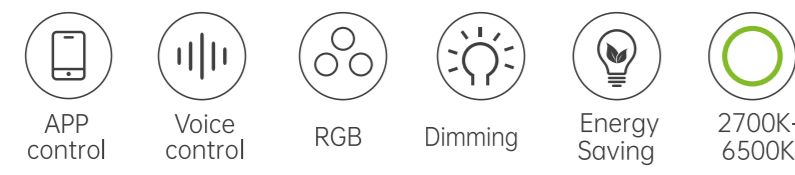




SMART CEILING LIGHT LB13



01

PARAMETER

SMART CEILING LIGHT
 Model: LB13
 Input voltage: 85V-265V, 50/60Hz
 Power: 20W
 Bulb color: RGB-CW
 Light: 160lm
 Operating Temp: -25°C-45°C
 Frequency Range: 2400-2485.5MHz
 WiFi Max. Transmitting Power (dbm) : 1.6dBm

PRODUCT INTRODUCTION

You could directly use the remote control to set the functions. Adjust the brightness, color temperature and RGB colors.

Smart ceiling light with remote, ideal for bedroom, living room, study room, balcony, home movie theater, party, festival, etc.

2.4G REMOTE CONTROL INSTRUCTION

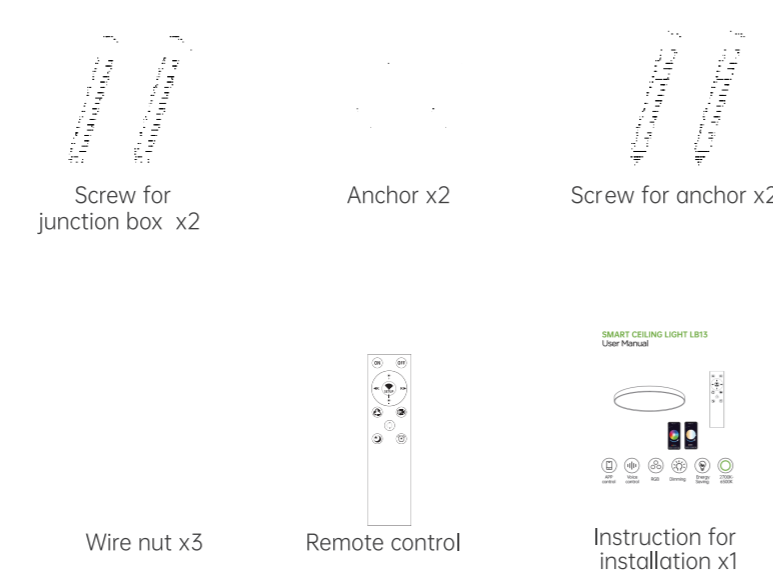
- Short press turn on the light
- Long press when the light is powered on in 10 seconds, long press ON until the light flashes once. Color matching succeeded.
- Short press turn off the light
- Long press when the light is powered on in 10 seconds, long press OFF until the light flashes once. Color removed succeeded.
- Brightness increases
- Brightness reduction
- Color temperature decrease
- Color temperature increase
- Press 5 seconds for 5 seconds, and the light will enter pairing mode.
- RGB color basic change
- RGB color dynamic scene change
- The three common scenes of reading, gathering and sleeping are changed circularly.
- Night light mode
- Delay to turn off the light for 60s

02

NOTE

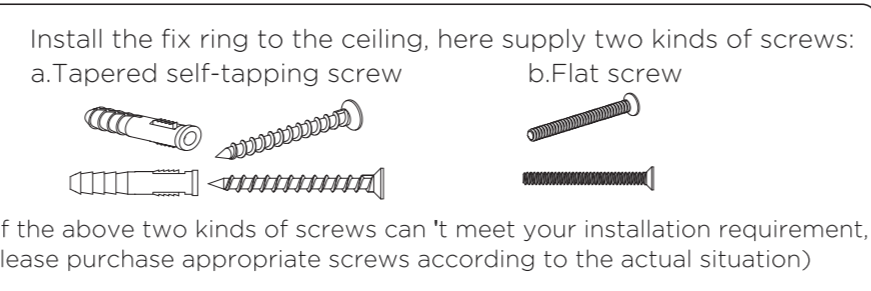
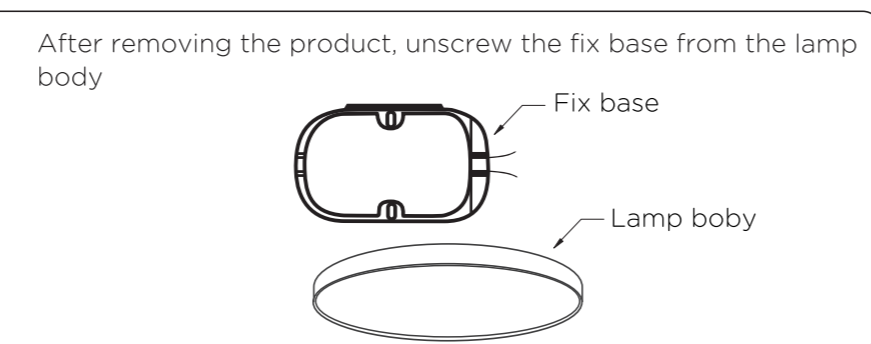
- Batteries are not included, Battery model: 1.5V AAA No.7 battery.
- Don't fit for dimmer switch.
- The remote control distance is 10 meters.
- Before use, please ensure code matching succeeded.
- Replace the battery regularly.
- The brightness of the light can not be adjusted by a wall switch.

ACCESSORIES LIST

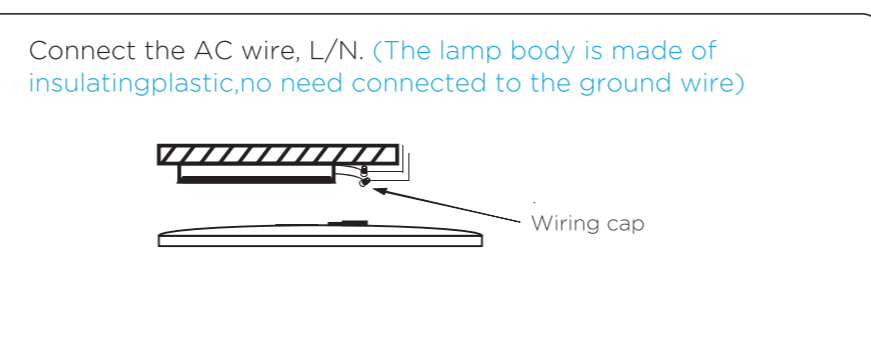


03

INSTALLATION STEPS

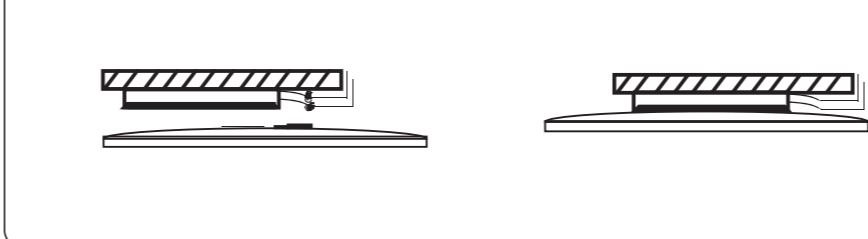


(If the above two kinds of screws can't meet your installation requirement, please purchase appropriate screws according to the actual situation)

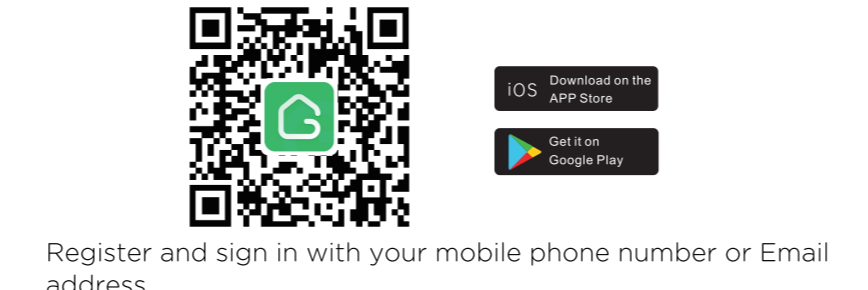


04

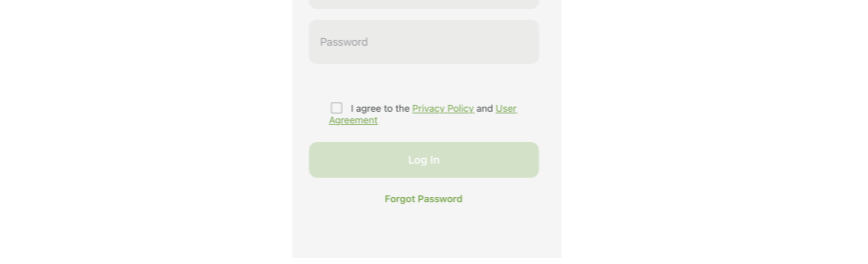
05



How to Download the Gosund App
 Option 1: Search for "Gosund" in the Apple APP Store or Google Play.
 Option 2: Scan the QR code below to enter the download page.



Register and sign in with your mobile phone number or Email address.

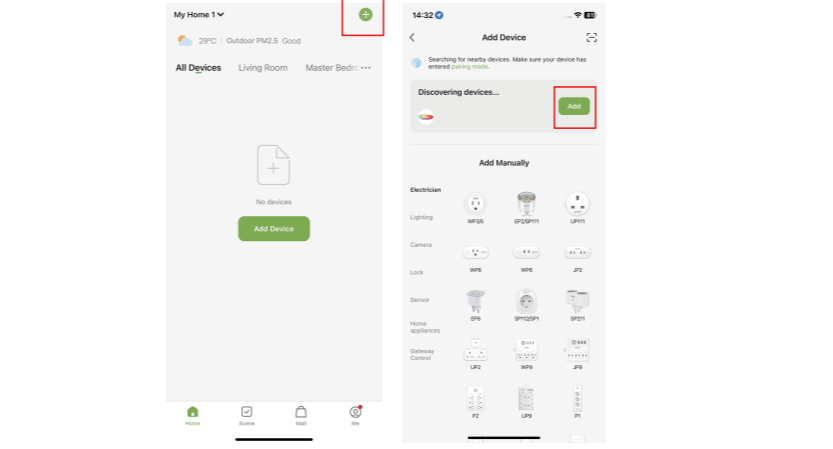


05

Preparations before pairing to the App

Install the smart ceiling light properly.
 Connect your mobile device to 2.4GHz Wi-Fi and enable Bluetooth and Location.

Set up the App
 Turn on the power switch, the light will flash quickly and enter into pairing mode automatically. If not, you can reset the light by turning power switch ON-OFF-ON-OFF-ON.
 Open the app, the light will be automatically found by the App, then click "Add" to add the smart ceiling light.



Click "DONE" button. Once paired, the light will stop flashing.

06

PRECAUTIONS

- Precautions Before Installation**
 - Power off before installation.
 - Do not exceed the rated voltage.
 - Do not install it on surfaces where are not stable or deformed.
 - Do not install it on or above the surface with high temperatures.
 - Please make sure that no gas, water, or electricity pipes and wires can be drilled through or damaged in your chosen mounting location.

- Precautions During Installation**
 - There must be no corrosive, explosive, or flammable materials around the lamp.
 - User should connect the cable correctly, and the lamp should be installed by a qualified electrician.
 - Please pay attention to connecting the wires correctly, and make sure the cable connection comply with national regulations.
 - Please make sure that the lampshade is clear in case of low luminous efficiency.
 - Please make sure that illuminants are securely fixed during the installation.

- Precautions About the Product**
 - It is not suitable for dimmers and electronic switches.
 - The LED light source inside the lamp body can not be replaceable.
 - The lampshade cannot be opened.
 - Do not touch the light when it is running.
 - Do not look straight into the light source (illumiant, LED, etc.).
 - Do not let the children touch this light and packaging to avoid danger.

07

NOTE: This equipment has been tested and found to comply with the limits for a Class B digital device, pursuant to part 15 of the FCC Rules. These limits are designed to provide reasonable protection against harmful interference in a residential installation. This equipment generates uses and can radiate radio frequency energy and, if not installed and used in accordance with the instructions, may cause harmful interference to radio communications. However, there is no guarantee that interference will not occur in a particular installation. If this equipment does cause harmful interference to radio or television reception, which can be determined by turning the equipment off and on, the user is encouraged to try to correct the interference by one or more of the following measures:
 - Reorient or relocate the receiving antenna.
 - Increase the separation between the equipment and receiver.
 - Connect the equipment into an outlet on a circuit different from that to which the receiver is connected.
 - Consult the dealer or an experienced radio/TV technician for help.
 Changes or modifications not expressly approved by the party responsible for compliance could void the user's authority to operate the equipment.
 This device complies with Part 15 of the FCC Rules. Operation is subject to the following two conditions:
 (1) this device may not cause harmful interference, and (2) this device must accept any interference received, including interference that may cause undesired operation.
RF Exposure Warning Statement:
 This equipment complies with FCC radiation exposure limits set forth for an uncontrolled environment. This equipment shall be installed and operated with minimum distance 20cm between the radiator & body.

08

1. Shenzhen Gosund Intelligent Technology Co., Ltd. declares that the radio equipment type LB13 is compliant with Directive 2014/53/EU. The full text of the EU declaration of conformity is available at the following internet address: <https://declaration.gosund.com/>
 2. Frequency Range: 2400-2485.5 MHz
 Wi-Fi/Bluetooth Max. Transmitting Power: 1.6dBm
 3. WEEE Disposal and Recycling Information

All products bearing this symbol are waste electrical and electronic equipment (WEEE as in directive 2012/19/EU) which should not be mixed with unsorted household waste. Instead, you should protect human health and the environment by handing over your waste equipment to a designated collection point for the recycling of waste electrical and electronic equipment, appointed by the government or local authorities. Correct disposal and recycling will help prevent potential negative consequences to the environment and human health. Please contact the installer or local authorities for more information about the location as well as terms and conditions of such collection points.

Contact Information:
 Manufacturer: Shenzhen Gosund Intelligent Technology Co., Ltd.
 Address: 501, Build A, No.12, Difu Road, Gushu Community, Xixiang Street, Baoan District, Shenzhen, China
 After-sale Service:
 UK Mainline number: 020 3966 5950/+44 020 3966 5950 (9am-6pm GMT+1)
 ES Mainline number: 925 94 05 46/+54 925 94 05 46
 Website: www.gosund.net
 Email: service.eu@gosund.com



09

10